

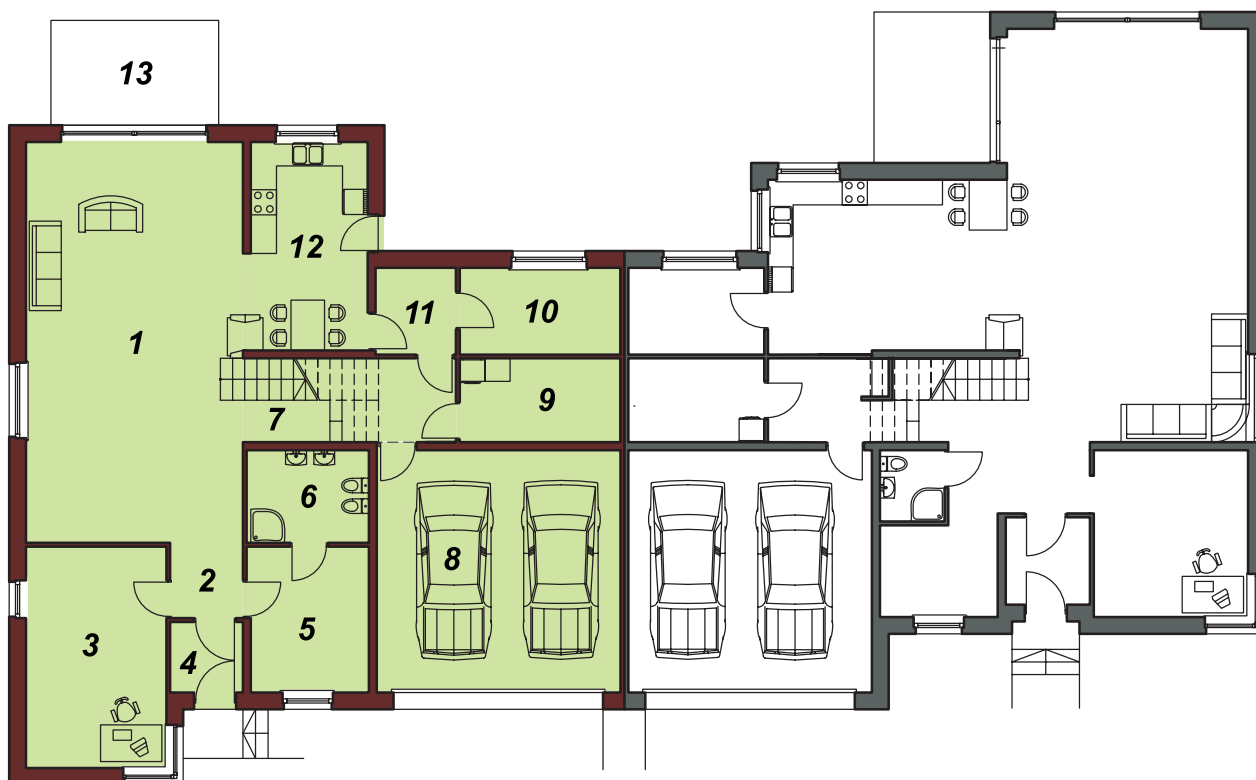
Plans of the house

Ground floor

Usable space 161,55m²

Space of terrace 10,00m²

1. Room 49,00m²
2. Hall 3,06m²
3. Study 17,43m²
4. Entrance hall 2,65m²
5. Dressing room 9,77m²
6. Bathroom 6,29m²
7. Corridor 6,95m²
8. Garage 33,23m²
9. Laundry room 7,49m²
10. Larder 7,76m²
11. Storage facility 3,85m²
12. Kitchen 14,07m²
13. Terrace 10,00m²



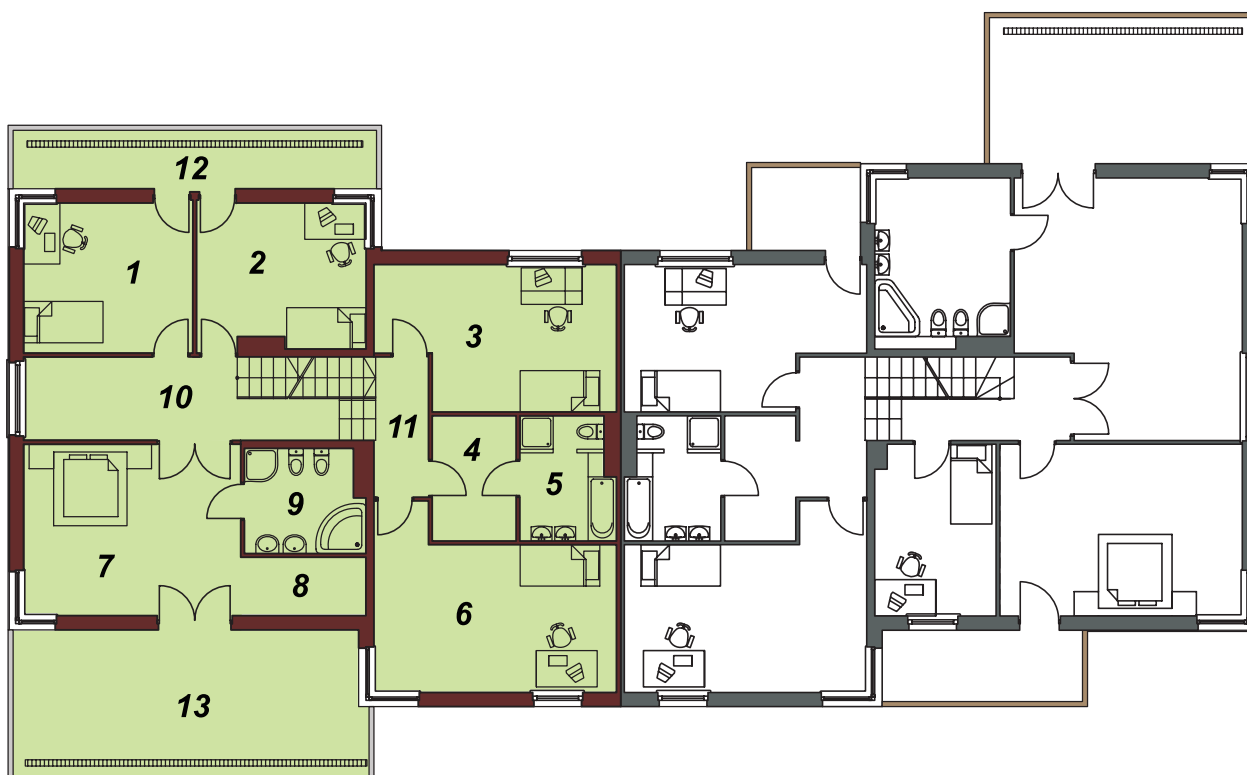
Plans of the house

First floor

Usable space 128,66m²

Space of terrace 44,84m²

1. Room 14,36m²
2. Room 13,82m²
3. Room 18,28m²
4. Dressing room 5,88m²
5. Bathroom 6,34m²
6. Room 21,62m²
7. Bedroom 21,11m²
8. Dressing room 3,81m²
9. Bathroom 6,87m²
10. Hall 12,40m²
11. Corridor 4,17m²
12. Terrace 13,30m²
13. Terrace 31,54m²



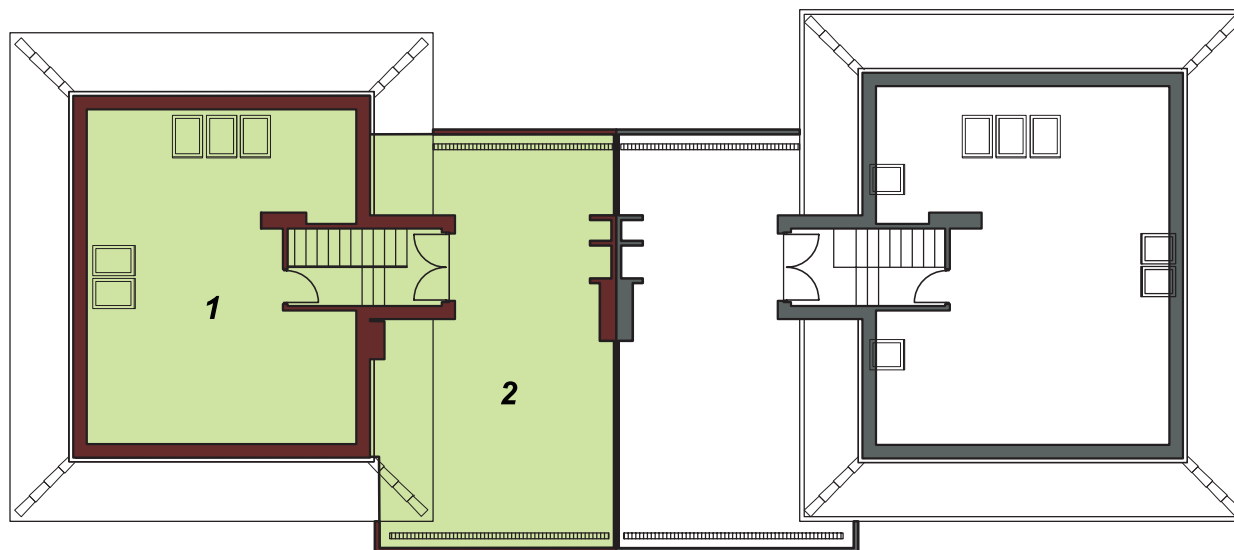
Plans of the house

Attic

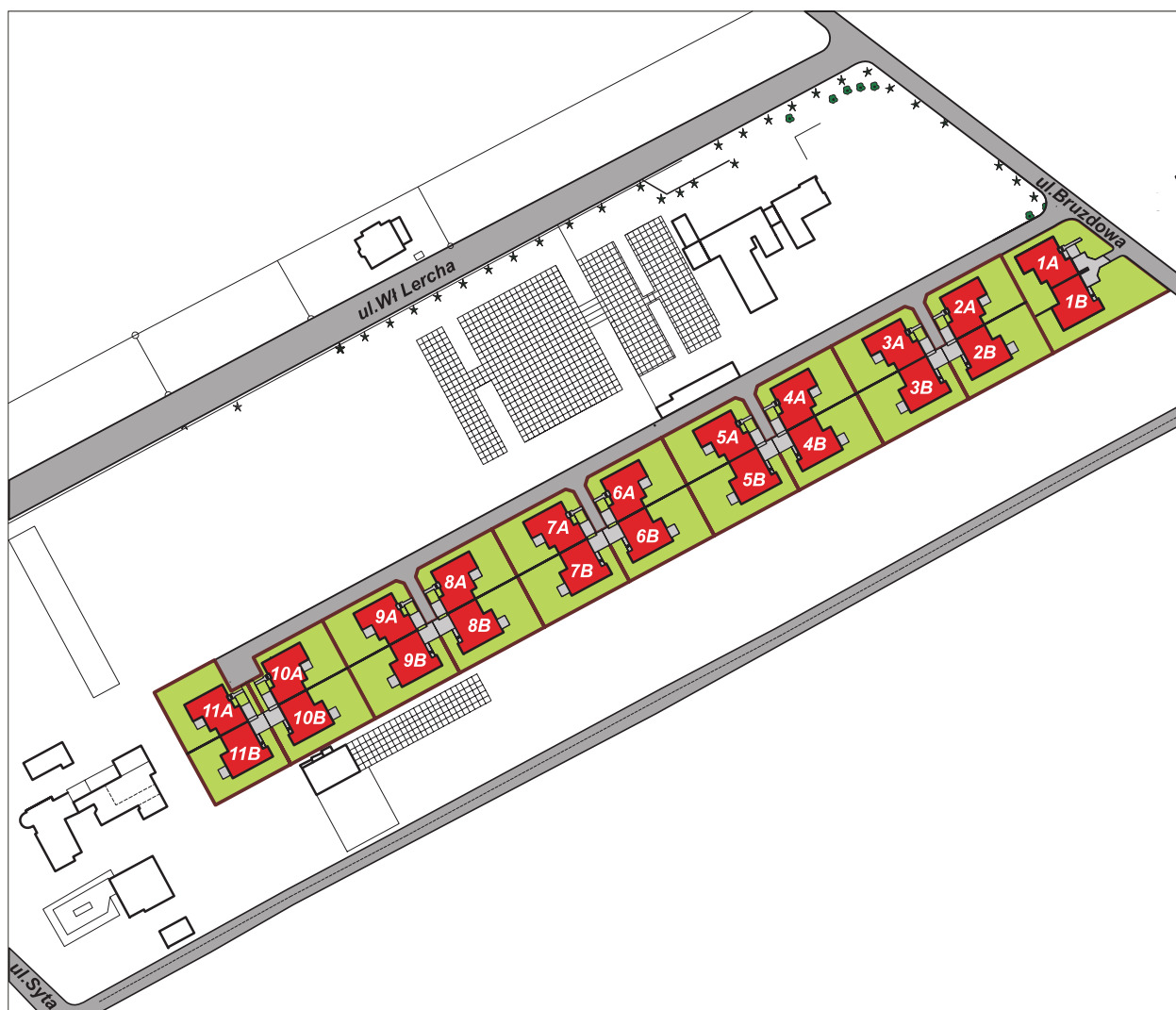
Usable space 36,70m²

Space of terrace 50,20m²

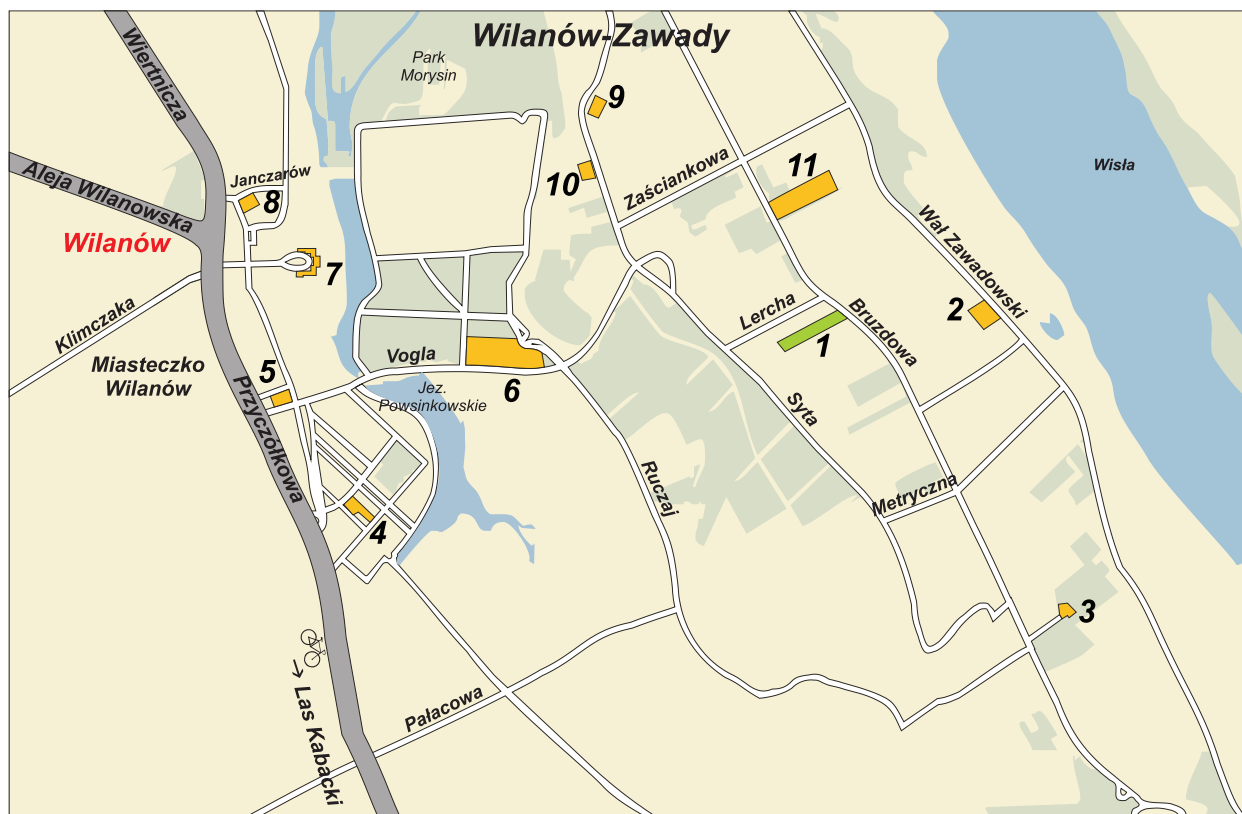
1. Attic 36,70m²
2. Terrace 50,20m²



Housing estate management plan



Location of the housing estate



1. Sady Wilanowski Housing Estate
2. Club – squash, quads, tennis, gymnasium, www.sinussportclub.pl
3. Kindergarten
4. Primary school
5. Kindergarten, www.zielona-ciuchcia.pl
6. Gold shooting range, www.golfparkspoland.pl
7. Wilanowski Palace
8. Primary school
9. Shop
10. Shop
11. Horse stud, www.stajnia-korona.pl

Visualisations

